



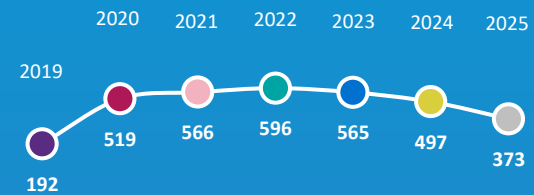
# 2025 Medical Training Survey

## College of Intensive Care Medicine of Australia and New Zealand

### INTRODUCTION

The Medical Board of Australia's Medical Training Survey (MTS) is a national, profession-wide survey of doctors in training in Australia. This infographic is for the College of Intensive Care Medicine of Australia and New Zealand for which 373 trainees responded to the survey. It is confidential and generates data used to strengthen medical training in Australia. The MTS is conducted annually with doctors in training, with 2025 being the seventh year.

### NUMBER OF CICM TRAINEES WHO PARTICIPATED

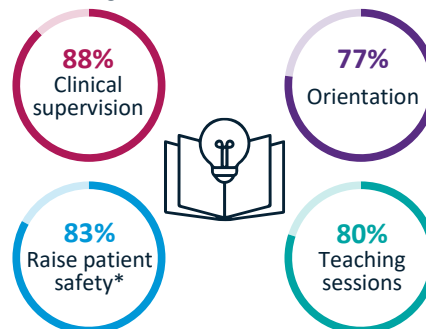


### SAMPLE PROFILE



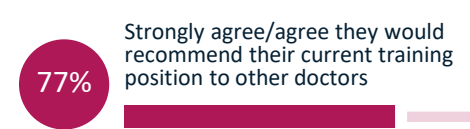
### QUALITY OF TRAINING

% excellent/good



\*Excludes those who reported that they did not receive this training

### RECOMMEND TRAINING



**80% OF TRAINEES**  
HAVE RECEIVED TRAINING ON HOW TO PROVIDE CULTURALLY SAFE CARE

**49% OF TRAINEES**  
HAD A HEAVY / VERY HEAVY WORKLOAD IN SETTING



### 23% OF TRAINEES

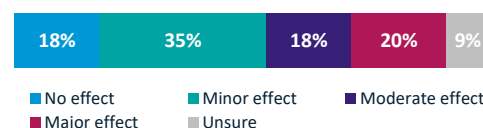
HAD ACCESSED FLEXIBLE WORK ARRANGEMENTS



### 3 IN 7 TRAINEES

EXPERIENCED AND/OR WITNESSED BULLYING, HARASSMENT, SEXUAL HARASSMENT, DISCRIMINATION AND/OR RACISM

EFFECT OF EXPERIENCING BULLYING, HARASSMENT, SEXUAL HARASSMENT, DISCRIMINATION AND/OR RACISM ON MEDICAL TRAINING

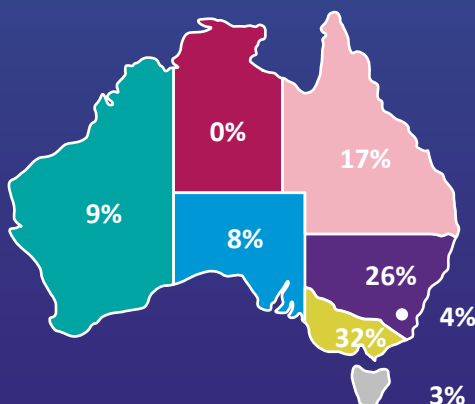
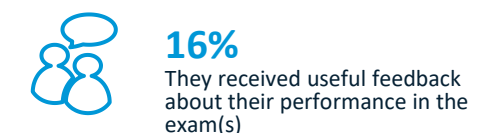
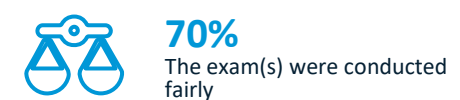
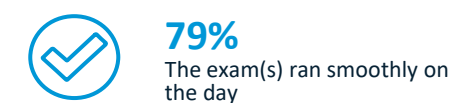


**28%**  
Reported the incident they experienced

**31%**  
Reported the incident they witnessed

### ASSESSMENT

% total strongly agree/agree



The above map shows the current term/rotation or placement % by state.

Visit [MedicalTrainingSurvey.gov.au](https://MedicalTrainingSurvey.gov.au) and use the interactive data dashboard to create your own tailored reports using MTS data from 2019 to 2025.

© Copyright Ahpra on behalf of the Medical Board of Australia

▲ ▼ Significant difference between the results of 2024 and 2025